

Driver Restraint Mounting Accessories

End Plates



Flat Bolt-in Part No. 2382-6 Bent Bolt-in Part No. 2388-6 Bent Bolt-in Part No. 2388-8 Flat Bolt-in Part No. 2385 Snap-in Part No. 2386

Bolt-in End Plates Available either flat or bent with $\frac{3}{8}$ " or $\frac{1}{2}$ " mounting hole.
For two or three inch wide straps (see diagram below right for installation):
 $\frac{3}{8}$ inch Mounting Hole **FLAT Bolt-in End Plate** Part No. 2382-6 \$4.99
 $\frac{3}{8}$ inch Mounting Hole **BENT Bolt-in End Plate** Part No. 2388-6 \$4.69
 $\frac{1}{2}$ inch Mounting Hole **BENT Bolt-in End Plate** Part No. 2388-8 \$4.89

For 3" wide straps – has a 3" wide slot and should NOT be used with 2 inch straps.
 $\frac{1}{2}$ inch Mounting Hole **FLAT Bolt-in End Plate** Part No. 2385 \$3.49
 With 3 inch wide slot - for 3 inch straps only.

Snap-in End Plate To be used with an eyebolt such as our Part No.'s 2384 or 2389. A spring-loaded retainer tab provides secure attachment yet allows easy removal when necessary. Can be used to convert a wrap-around mount or bolt-in belt to snap-in (not recommended if the existing bolt-in end plate is sewn on).
Snap-in End Plate Only, each Part No. 2386 \$4.29

Miscellaneous Hardware



Wide 3 Bar Adjuster Part No. 2381 \$4.69
Narrow 3 Bar Adjuster Part No. 2380 \$4.29
Anti-Vibration Spring Part No. 2387 \$2.99
Helps to prevent shoulder harness or lap belt adjuster slippage.

Hardware Kits



Bolt-in Hardware Kit Part No. 2383 Eyebolt Hardware Kit Part No. 2384

These items may come in handy when installing your harness or when converting a wrap-around mount to a bolt-in or snap-in mount.

Bolt-in Hardware Kits Each kit includes two fully threaded high-strength bolts, two AN365 locknuts and two AN970 large area backup washers. Enough to install both ends of a lap belt.

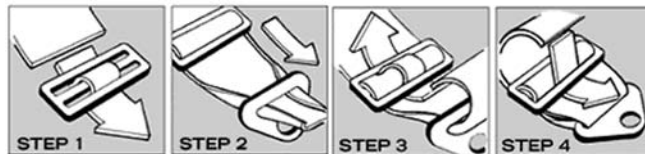
$\frac{3}{8}$ inch Bolt-in Hardware Kit Part No. 2383-6 \$6.99
 With $\frac{3}{8}$ - 24 x 2" fully threaded bolts.
 $\frac{1}{2}$ inch Bolt-in Hardware Kit Part No. 2383-8 \$8.99
 With $\frac{1}{2}$ - 20 x 2.5" fully threaded bolts.

Forged Eyebolt Hardware Kit Includes 1 each forged eyebolt with $\frac{7}{16}$ -20 thread (1 $\frac{1}{2}$ " thread length), nut & backup washer. Do not use bent eyebolts!

Forged Eyebolt Hardware Kit Part No. 2384 \$5.49
 Note: Mounts only a single point.

Short Forged Eyebolt This quality $\frac{7}{16}$ -20 eyebolt from OMP has a shank length of about 0.85". Use this short eyebolt if your vehicle has a $\frac{7}{16}$ -20 welded nut in the chassis.

Short $\frac{7}{16}$ -20 Forged Eyebolt, each Part No. 2389 \$4.89



Steps for converting a wrap-around mount to a bolt-in or snap-in mount.

Seat Accessories

Seat Mounting



Adjustable Seat Back Brace Part No. 5176 \$89.99
OMP Side-Mount Brackets Part No. 3459 \$150.00
OMP Aluminum Seat Brackets with Dampers Part No. 3456 \$540.00
OMP Bottom-Mount Brackets Part No. 3458 \$95.00
OMP Sliding Rail Kit Part No. OMP-HC/665 \$75.00

Adjustable Seat Back Brace Part No. 5176 \$89.99
This strong steel unit is designed to bolt to the back of your seat and clamp to the roll bar. No welding is required. The unit can be positioned from 2 $\frac{1}{2}$ " up to 15", making it ideal for multi-driver cars. It can be used with just about any seat at any angle. For added safety in side impacts, it is recommended that you use two braces.

OMP Side-Mount Seat Brackets Part No. 3459 \$150.00
For side-mount seats (most composite seats). Several height positions front and back allow you to choose different seat heights and angles.

OMP Aluminum Seat Brackets with Dampers Part No. 3456 \$540.00
For use on OMP seats which utilize side mounting points. These unique aluminum brackets feature urethane dampers at each attachment point to help reduce the compressive stress (and associated injuries) on the spinal column while driving. Height adjustable, in a hard anodized black finish

OMP Bottom-Mount Seat Bracket Kit Part No. 3458 \$95.00
Includes 2 heavy-duty extruded aluminum bases and 4 cast aluminum vertical mounts. Each vertical mount has 4 holes to allow the seat height to be varied. The vertical brackets may have to be cut down for the lowest seat height positions.

OMP Sliding Rail Kit for Bottom-Mount Seats Part No. OMP-HC/665 \$75.00
This kit mounts between the seat mount brackets (sold separately) and the seat to allow fore-and-aft movement. Fits bottom-mount seats only.

Backsaver Pads

See page 143 for Creafoam Bead Seat Insert Kits and Two-part Seat Foam Kits to customize the fit of your seat!



The Backsaver was originally developed for military combat pilots. The Backsaver's fluid yet firm support was found to be the best material to minimize discomfort and greatly reduce fatigue under very grueling conditions. Backsaver foam absorbs up to 97% of impact energy resulting in low rebound. Although the cushion is only one inch thick, it will not bottom out because of its high energy absorption. A rubberized, high-friction bottom surface keeps the pad in place on the seat. A satiny material is bonded to the top of the pad to provide a comfortable surface for the driver. The Backsaver acts like a gasket between driver and seat which insures perfect contact for precise feedback. The Backsaver cushion now comes in a larger size that costs nearly 25% less per square inch than the standard size pad. Pads can be cut with a scissors or sharp knife.

Standard Backsaver Pad, 16" x 18" Part No. 3439 \$69.99
Extra Large Backsaver Pad, 18" x 36" Part No. 3438 \$134.99



Kathy Hillier photo

Jim at Blackhawk Farms Raceway (enjoying his Backsaver Pad)