

Driver Restraint Mounting Accessories

End Plates



Flat Bolt-in Part No. 2382-6 Bent Bolt-in Part No. 2388-6 Bent Bolt-in Part No. 2388-8 Flat Bolt-in Part No. 2385 Snap-in Part No. 2386

Bolt-in End Plates Available either flat or bent with $\frac{3}{8}$ " or $\frac{1}{2}$ " mounting hole.

For two or three inch wide straps (see diagram below right for installation):

- $\frac{3}{8}$ inch Mounting Hole **FLAT Bolt-in End Plate** Part No. 2382-6 \$4.99
- $\frac{3}{8}$ inch Mounting Hole **BENT Bolt-in End Plate** Part No. 2388-6 \$4.99
- $\frac{1}{2}$ inch Mounting Hole **BENT Bolt-in End Plate** Part No. 2388-8 \$5.39

For 3" wide straps – has a 3" wide slot and should NOT be used with 2 inch straps.

- $\frac{1}{2}$ inch Mounting Hole **FLAT Bolt-in End Plate** Part No. 2385 \$3.89
- With 3 inch wide slot - for 3 inch straps only.

Snap-in End Plate To be used with an eyebolt such as our Part No.'s 2384 or 2389. A spring-loaded retainer tab provides secure attachment yet allows easy removal when necessary. Can be used to convert a wrap-around mount or bolt-in belt to snap-in (not recommended if the existing bolt-in end plate is sewn on).

- Snap-in End Plate Only, each** Part No. 2386 \$4.29

Miscellaneous Hardware



- 3 Bar Adjuster** for 1.75" or 2" wide straps, each Part No. 2380 \$4.69
- 3 Bar Adjuster** for 3" wide straps, each Part No. 2381 \$4.99
- Anti-Vibration Spring** for 3" quick-adjusters, each Part No. 2387 \$2.99
- Helps to prevent shoulder harness or lap belt adjuster slippage.

Arm Restraints and Harness Pads



Simpson Arm Restraints are used in open-cockpit cars to keep a driver's arms inside the vehicle during a roll-over. A loop at the end of the strap is captured when the lap belt is fastened so that the arms are free as soon as the belt buckle is released. The **Sprint Car Restraints** are designed for the exposed design of a sprint car cockpit and are therefore more restrictive. They do not allow enough movement for hand signals. Both styles are available in black, blue, or red.

- Simpson Arm Restraints, Pair** Part No. 2322-Color \$37.99
- Simpson Sprint Car Arm Restraints, Pair** Part No. 2323-Color \$41.99



Harness Sleeves are padded to cushion the force exerted by the shoulder harness. These pads utilize a wrap-around, Velcro® secured attachment that allows quick and easy installation or removal. Available in black, blue, or red. Sold in pairs.

- Simpson Nomex® Harness Sleeves, Pair** Part No. 2129-Color \$39.99
- Willans Brushed Nylon Harness Sleeves, Pair** Part No. 2379-025-3-Color .. \$32.99



Simpson Helmet Restraint Strap Helps prevent driver fatigue in circle track racing by taking strain off the neck muscles. An adjustable loop goes around the driver's arm at the shoulder and fastens to a D-ring on the helmet. Available in black, blue, or red.

- Simpson Helmet Restraint Strap** Part No. 2321-Color \$13.99
- Note: This strap is not intended to protect against any injury during an impact.

Hardware Kits



Bolt-in Hardware Kit Part No. 2383 Eyebolt Hardware Kit Part No. 2384

These items may come in handy when installing your harness or when converting a wrap-around mount to a bolt-in or snap-in mount.

Bolt-in Hardware Kits Each kit includes two fully threaded high-strength bolts, two AN365 locknuts, and two AN970 large area backup washers. Enough to install both ends of a lap belt.

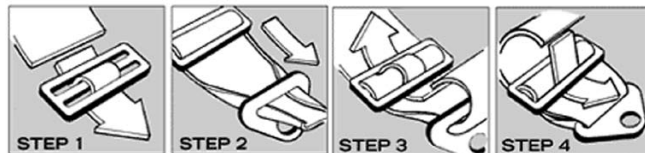
- $\frac{3}{8}$ inch Bolt-in Hardware Kit Part No. 2383-6 \$6.99
- With $\frac{3}{8}$ - 24 x 2" fully threaded bolts.
- $\frac{1}{2}$ inch Bolt-in Hardware Kit Part No. 2383-8 \$8.99
- With $\frac{1}{2}$ - 20 x 2.5" fully threaded bolts.

Forged Eyebolt Hardware Kit Includes 1 each forged eyebolt with $\frac{7}{16}$ -20 thread (1 $\frac{1}{2}$ " thread length), AN365 locknut, and AN970 backup washer. Do not use bent eyebolts!

- Forged Eyebolt Hardware Kit** Part No. 2384 \$5.99
- Note: Mounts only a single point.

Short Forged Eyebolt This quality $\frac{7}{16}$ -20 eyebolt from OMP has a shank length of about 0.85". Use this short eyebolt if your vehicle has a $\frac{7}{16}$ -20 welded nut in the chassis.

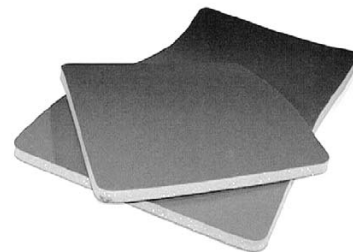
- Short $\frac{7}{16}$ -20 Forged Eyebolt, each** Part No. 2389 \$4.89



Steps for converting a wrap-around mount to a bolt-in or snap-in mount.

Backsaver Pads

See page 159 for
Creafoam Bead Seat
Insert Kits and
Two-part Seat Foam
Kits to customize
the fit of your seat!



The Backsaver was originally developed for military combat pilots. The Backsaver's fluid yet firm support was found to be the best material to minimize discomfort and greatly reduce fatigue under very grueling conditions. Backsaver foam absorbs up to 97% of impact energy resulting in low rebound. Although the cushion is only one inch thick, it will not bottom out because of its high energy absorption. A rubberized, high-friction bottom surface keeps the pad in place on the seat. A satiny material is bonded to the top of the pad to provide a comfortable surface for the driver. The Backsaver acts like a gasket between driver and seat which insures perfect contact for precise feedback. The Backsaver cushion also comes in a larger size that costs nearly 15% less per square inch than the standard size pad. Pads can be cut with a scissors or sharp knife.

- Standard Backsaver Pad, 16" x 18"** Part No. 3439 \$69.99
- Extra Large Backsaver Pad, 18" x 36"** Part No. 3438 \$134.99



Kathy Hillier photo

Jim at Blackhawk Farms Raceway (enjoying his Backsaver Pad)