

Stack Intelligent Tachometers

ST200 Clubman Tachometers

See page 44
for Classic
Stack Tachs



**STACK
STACK
STACK**

The Clubman Tachometer provides the exceptional reliability and accuracy of stepper motor movement in a sealed, waterproof case. Features maximum RPM tell tale and easy hookup to a Stack shift light (sold separately), all at a reasonable price. Mounts in an 80mm (3 1/16") opening. Available in three RPM ranges; 0-8000, 0-4-10,500, and 0-6-15,000. Please specify RPM range when ordering. (White face available via Special Order.)

ST200 Clubman Tachometer Part No. ST200-(RPM Range).... \$334.99

Note: The ST200 Tachometer is compatible with magneto ignition systems. All other Stack tachs are not compatible with magnetos.

ST400 Professional Tachometers

Series ST400 Professional Tachometers incorporate microprocessor controlled stepper motor movements for "no waver" operation throughout the rpm range. This technology also permits the dial to be compressed at the low end and expanded at the top end for more accurate reading in the engine's normal operating range. All models include 25 minute recording for on-tach playback, a tell-tale function, panel mount shift light, switch kit, wiring harness, and complete instructions. Backlit dial for night use. Mounts in an 80mm (3 1/16") opening (bezel diameter is 3.47"). ST430 (5" diameter) is also available via special order. When ordering, please specify RPM range from the chart at right.



Part No. ST400-0-3-8500

ST400 Dial Scale Options

- 0-8000 RPM
- 0-3-8500 RPM
- 0-5-10000 RPM
- 0-4-10500 RPM
- 0-6-13000 RPM
- 0-8-16000 RPM
- 0-9-18000 RPM
- 0-10-20000 RPM

ST400 Professional Tachometer

Part No. ST400-(RPM range)..... \$529.00

Replacement Parts for Stack ST400 & ST400C

Wiring Harness Part No. ST594 \$65.99

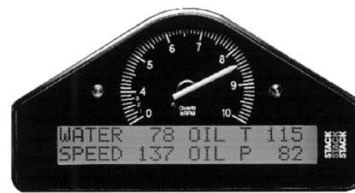
Replacement wiring harness fits both Stack ST400 Professional or ST400C Classic Tachometers.

Switch Kit Part No. ST510..... \$33.99

Includes two push-button switches with weatherproof covers, as supplied with Stack ST400 tachs. These switches are used to access shift light settings, tell-tale, memory, and cylinder number set-up.

Please see our website for more Stack parts and accessories!

ST8100 Stack Dash Display Systems



The ST8100 Dash Display System replaces conventional race car instrument panels with an integrated Stack analog tachometer, shift light, warning light, and a large character LCD readout which displays all vital engine parameters. The system is supplied in a carbon fiber enclosure with backlighting for installation in any car. A wiring harness, all required sensors, and complete instructions are included. Each dash display system is configured for your car, and will meet your most demanding requirements. **Special Order only - Custom items are not returnable.** Please call to discuss the available options for your custom Stack Dash.

ST8100 Stack Dash Display System Part No. ST8100..... \$1,399.00

ST8100M Stack Dash Display System Part No. ST8100M..... \$2,099.00

The "M" version has all of the features of the standard system plus:

Lap Time Memory, Corner speeds, and the Predictive Lap Time Display!

Stack Shift Lights

These easy-to-fit options complement the tachometer in helping the driver to optimize gear shifts and reduce lap times. Easy hookup to any Stack tach.

Dash Top Shift Light-White Part No. ST533 \$69.99

Dash Top Shift Light-Red Part No. ST534 \$69.99

Panel Mount Shift Light-White Part No. ST536 \$39.99

Panel Mount Shift Light-Red Part No. ST537 \$39.99

Panel Mount Shift Light-Amber Part No. ST538 \$39.99

Stack Sensors

These analog sensors fit Stack ST8100 and ST700 displays.

Analog Fluid Pressure Sensor & Loom, 0-30 psi, 1/8 NPT... Part No. ST742K..... \$134.99

Analog Fluid Pressure Sensor & Loom, 0-150 psi, 1/8 BSP .. Part No. ST746K \$144.99

Analog Fluid Pressure Sensor & Loom, 0-150 psi, 1/8 NPT .. Part No. ST745K..... \$134.99

Analog Fluid Pressure Sensor only, 0-150 psi, 1/8 NPT Part No. ST745 \$124.99

Analog Fluid Temperature Sensor & Loom, 150°C, 1/8 BSP Part No. ST760K \$65.99

Analog Fluid Temperature Sensor only, 150°C, M14..... Part No. ST761 \$52.99

Analog Fluid Temperature Sensor & Loom, 150°C, 1/8 NPT Part No. ST764K \$65.99

Analog Fluid Temperature Sensor only, 150°C, 1/8 NPT..... Part No. ST764..... \$52.99

These digital sensors fit Stack ST8600 or ST700 displays.

Solid State Pressure Sensor, 150 psi, 1/8 BSP Part No. ST747 \$184.99

Solid State Temperature Sensor, 150°C, M6 x 0.70 Part No. ST769 \$97.99

Wheel Speed Sensor (pulse amp type) Part No. ST492 \$194.99

Wheel Speed Sensor (proximity type)..... Part No. ST670 \$194.99

ST670 to ST8100ES Input Adapter..... Part No. ST918040 \$49.99

Racetech Competition Mechanical Gauges by RaceParts

Racetech Gauges are original equipment on many British made formula cars. All gauges in the line are the standard 2 1/16 inch diameter and all have black faces (green faces are no longer available). These gauges are not illuminated. All gauges are mechanical - electric versions are not available. Temperature gauges are available with either 7 or 9 foot capillary tubes and are furnished with a 3/8 BSP male x 3/8 BSP male adapter fitting. An optional 5/8-18 male x 3/8 BSP male adapter is also available. (The capillary tube has a 3/8 BSP female threaded tube nut permanently installed.) Capillary tubes on temperature gauges must be handled with care. If broken, the gauge is not repairable. Avoid excessive flexing or twisting of the tube particularly when installing the sensor bulb. Be sure to use a wrench to prevent the sensor bulb from turning when tightening the gland nut. Pressure gauges do not include tubing kits.

15 psi Fuel Pressure Gauge, 1/8 BSP male..... Part No. 1090-15 \$66.99

Do not use plastic tubing on fuel pressure gauges; only use braided stainless AN line or our Fuel Pressure Gauge Isolator (Part No. AM5282 on page 47) with the appropriate adapters.

100 psi Oil Pressure Gauge, 1/8 BSP male..... Part No. 1091-100psi \$66.99

160 psi Oil Pressure Gauge, 1/8 BSP male..... Part No. 1091-160psi \$66.99

110°C Water Temperature Gauge, 84" capillary tube..... Part No. 1092-84 \$114.99

110°C Water Temperature Gauge, 108" capillary tube Part No. 1092-108..... \$114.99

See page 47 for in-line water temperature sensor adapters for 25mm to 32mm hose.

140°C Oil Temperature Gauge, 84" capillary tube..... Part No. 1093-84 \$109.99

140°C Oil Temperature Gauge, 108" capillary tube..... Part No. 1093-108..... \$109.99

Dual 100 psi Oil Pressure/110°C Water Temp., 84" capillary Part No. 1094-84 \$174.99

Dual 100 psi Oil Pressure/110°C Water Temp., 108" capillary..... Part No. 1094-108..... \$174.99

Dual 100 psi Oil Pressure/140°C Oil Temp., 84" capillary Part No. 1095-84 \$182.99

Dual 100 psi Oil Pressure/140°C Oil Temp., 108" capillary Part No. 1095-108..... \$182.99

Replacement 10mm Copper Crush Washer for temperature bulb..... Part No. 1096..... 79¢

Extra 3/8 BSP x 3/8 BSP male temperature bulb adapter (comes with gauge) Part No. 1097 \$14.99

Optional 5/8-18 male x 3/8 BSP male temperature bulb adapter Part No. 1098 \$14.99

5/8-18 is now the most common size for mechanical temperature bulbs. It is so close to 3/8 BSP that they are hard to tell apart. A 3/8 BSP fitting will not quite fit in a 5/8-18 hole; a 5/8-18 fitting will be loose in a 3/8 BSP hole.

7 foot plastic oil pressure hose with 1/8 BSP female tube nuts*..... Part No. 1099-7 foot \$15.99

9 foot plastic oil pressure hose with 1/8 BSP female tube nuts*..... Part No. 1099-9 foot \$17.99

*Note: SCCA requires any oil line in the driver's compartment to be metal braided hose.

Special Straight 1/8 BSP Hose End for Size 3 Braided PTFE Racing Hose..... Part No. 3268-1/8-00..... \$13.99

Special 45° 1/8 BSP Hose End for Size 3 Braided PTFE Racing Hose..... Part No. 3268-1/8-45..... \$18.99

Special 90° 1/8 BSP Hose End for Size 3 Braided PTFE Racing Hose..... Part No. 3268-1/8-90..... \$18.99

These hose ends have a flat sealing surface for Racetech (or Smith's) pressure gauges. See page 85 for PTFE hose.



100 psi Oil Pressure Gauge
Part No. 1091-100psi



140°C Oil Temp. Gauge
Part No. 1093-xx



Oil Pressure/Water Temp.
Part No. 1094-xx



Typical temperature sensing
bulb with 3/8 BSP adapter

If you don't want to use a plastic tubing kit to connect Racetech pressure gauges, we now stock special reusable hose ends for size 3 Stainless Steel Braided PTFE Hose!